

UPGRADING YOUR TR-6000 SERIES FIRMWARE

Before applying Build TR6-4.0.2Rt your radio must be running Build 84 or higher.



Warning: Before applying any versions of firmware please read and understand this entire document. If you encounter problems with the new firmware you can seek help from the Support Team. You should only perform a firmware upgrade during supported hours (7am to 5pm PST, Monday to Friday) in case you need emergency assistance. If you have any questions, please call or email us before starting the upgrade process. It is advised that network administrators document their configuration before proceeding with the update, then after the upgrade manually re-enter the information if required.

Important: Firmware may become unusable if inappropriately applied or the connection is broken during the upgrade. Ensure no interruption during upgrade. If the connection is broken or power goes off during upgrade, the unit may become inoperative! **Once this package is applied, you can not revert to earlier versions!**

This package contains the following:

Firmware

TR6-4.0.2Rt.bin

Documents

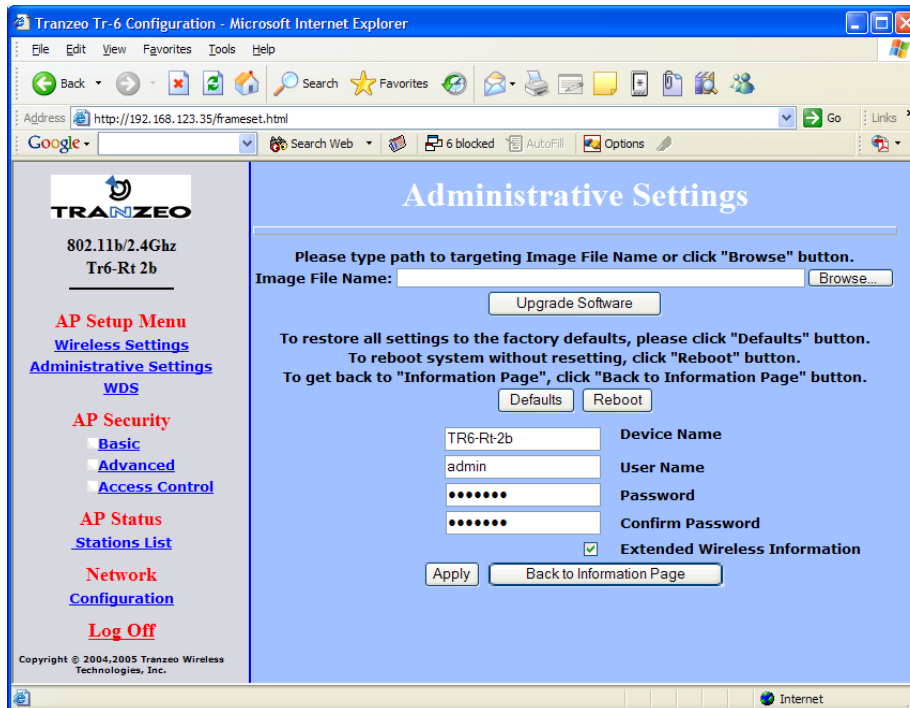
Upgrading your Firmware build 4.0.2, Release Notes.pdf (this document)
General Firmware Changes.pdf.

MIBs

tranzeo.MIB Private MIB for Tranzeo Wireless radios running 3.3.0 or higher, V0.2

Upgrading the TR-CPQ firmware to Build TR6-4.0.2Rt

1. Log into the radio and go to the *Administrative Settings* page.



2. Click *Browse* to browse to the location of the upgrade file **TR6-4.0.2Rt.bin**. Then click the upgrade software button to apply the firmware. The radio will upgrade the firmware and then reboot. All the LEDs including the Power LED will go blank during the upgrade for up to 30 seconds. This is normal.
3. Your Radio is now upgraded and will continue to pass traffic after it reboots.

See the next page for Release Notes

UPGRADING YOUR TR-6000 SERIES FIRMWARE

Changes in 4.0.2

UI:

- 1) Web browser's title bar now displays device name
- 2) Channel list and band refreshes dynamically with country selection
- 3) Information page will now correctly display TPC status
- 4) Minor Opera and Firefox layout fixes
- 5) Information Page will now display card chipset as well as card type.
- 6) AP station list will now show CPE statistics
- 7) WDS statistics are now available
- 8) Added Configuration Import/Export feature
- 9) Added TFTP configuration upload/download option
- 10) Added AP and PxP functionality for SL5

Radio and Wireless:

- 1) Fixed automatic power reduction issue in TR-5aPlus
 - 2) Fixed peerlist clearing
 - 3) Add 5/10MHz support for card type 6B
 - 4) Added option to restrict DFS channel jumps in CE domain
- *Note*** This option is not available to FCC users as the FCC does not permit this feature

Wireless Security:

- 1) Fixed an issue that disabled WPA-PSK after switching to CPE mode from AP mode with WPA Enterprise enabled.
- 2) Fixed a WPA key timeout issue that was causing wireless disconnects under continuous heavy traffic

Regulatory:

- 1) Extend available frequencies in Chile band to 5850MHz
- 2) Extend available frequencies in Brazil band to 5850MHz
- 3) Enabled 5GHz band for Spain
- 4) Moved Channel 167 to "Band C" in the U.K

Network:

- 1) Fixed PPOE connection recovery issue when session was lost unexpectedly
- 2) Fixed an PPOE mode issue when using locator to change the radios IP address

Network Security:

- 1) Added VLAN Management support (*All Radios except FDD*). Does not support tagging/stripping of client traffic. **Radio will not respond to Locator unless PC has matching VLAN.**
- 2) Fixed a rare crash when accumulating signal statistics under heavy traffic

UPGRADING YOUR TR-6000 SERIES FIRMWARE

For past firmware changes please see the General Firmware Changes document.

